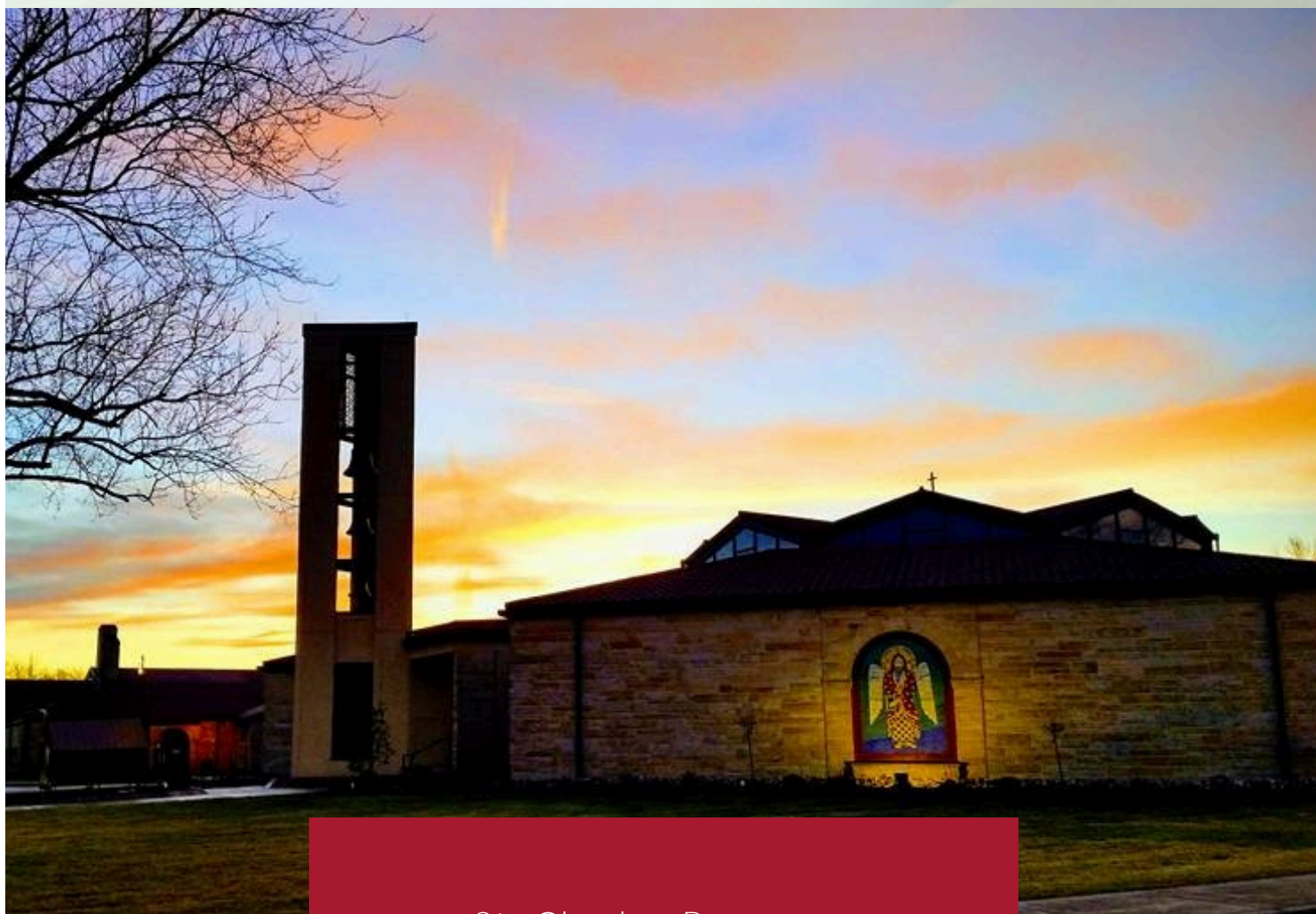


ANNUAL REPORT 2022-2023



St. Charles Borromeo
Catholic Church
Lima, OH

2022-23 IN REVIEW

In the following pages, you will find a review of our fiscal year 2022 to 2023. Please note that our fiscal year runs July 1 through June 30. Analysis includes St. Charles By The Numbers, which details our parishioners and related events, followed by a Summary of Income and Expenses with some explanatory notes and highlights.

Lastly you will see a list of our charitable giving and upcoming projects, all made possible by our parishioners. Please direct any inquiries to Laurieann Campbell, Director of Operations, (419)228-7635 x3000, campbelll@stcharleslima.org.



ST. CHARLES BY THE NUMBERS



38 Baptisms



43 First Communicants



38 Confirmations



3 Marriages



Religious Education
102 Students, 13 Teachers



32 Funerals



3,258 Registered Parishioners

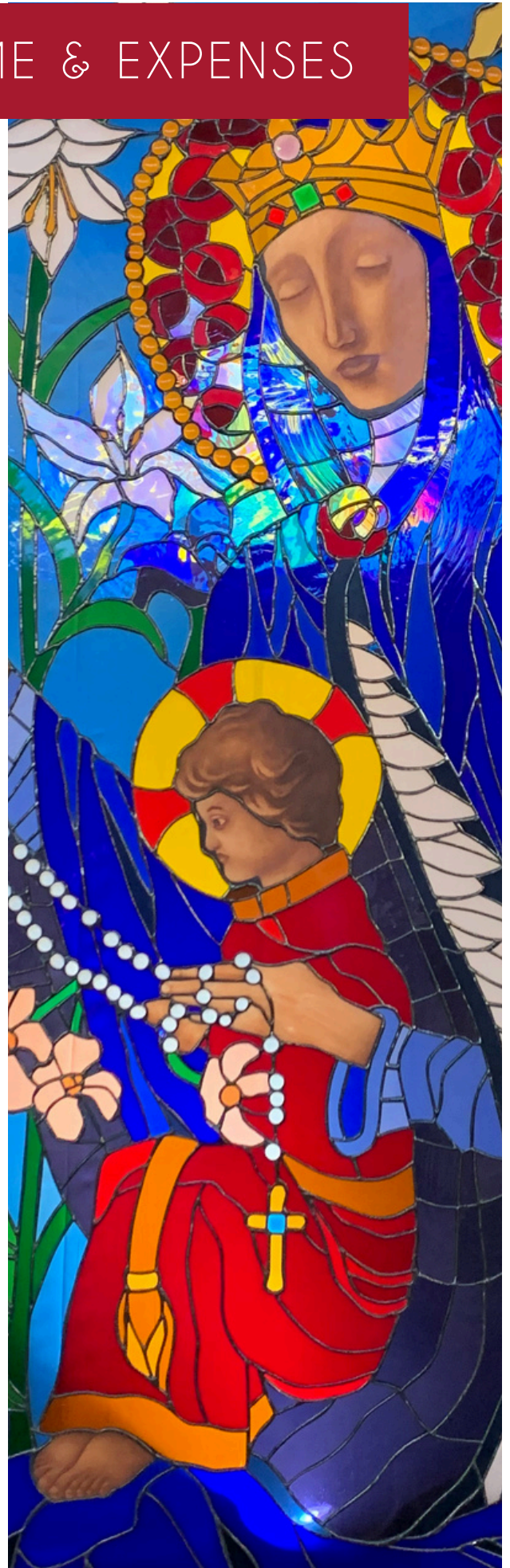
SUMMARY OF INCOME & EXPENSES

The following are some notes to explain changes in some expenses and income from fiscal year 2022-23.

1. Under "Other Collections & Initial Offering," we observed a decrease of \$68,974, or 79%. This dip can be attributed to the temporary pause in May and October Visitation, necessary for the execution of the Living Christ Campaign for our elevator project.
2. Moving on to the heart of our community, our Parish Activities, we witnessed a slight uptick in both Gross Receipts and expenses. It was good to see an awakening after Covid of our parish community actively engaging in such meaningful endeavors. This rise reflects our increased investments in Adult Formation and a delightful resurgence of Parish Adult Formation and Activities.
3. You will notice operational expenses were down somewhat from the previous year, especially when looking at salary and fringe benefit expenses. This was primarily due to some vacant pastoral staff positions such as Associate Pastor and Pastoral Care Coordinator.
4. It's heartening to witness the commitment to the future of our parish due to the generosity of our parishioners. Gifts and Donations-Operating Income experienced a modest rebound in the Parish Endowment due to the continued support of our Parishioners.
5. In Student Services Expenses, we noted an increase. This was primarily driven by cafeteria expenditures and improvements, all of which was expensed and paid for with overages in the cafeteria budget. Our commitment to enhancing student experiences remains unwavering.
6. In the realm of Other Income-Nonoperating we had a tremendous increase. This can be attributed to the ongoing recovery of our investment accounts from the recent stock market downturn. We're navigating the waves, and as always, the focus is on prudent financial management.
7. Lastly, our capital expenses for the fiscal year were unusually low. No significant expenditures demanded attention, but we did some small yet impactful improvements to our shared spaces. Highlights include the replacement of the original sidewalks in front of the school, plumbing repairs at the Christian Corner Community Center, and new flooring in the rectory.

In conclusion, St. Charles Parish has navigated the fiscal waters with prudence, making necessary investments while being mindful of our resources. Your continued support and dedication to our community are the cornerstones of our success.

Here's to another year of growth, community, and shared blessings.



(Unaudited) St. Charles Borromeo Parish - July 2022 through June 2023

	Fiscal Year Ended		Increase/(Decrease)	
	June 2023	June 2022	Amount	Percent
Income Operating				
Tuition and Fees (Net of Financial Aid)	\$1,596,736	\$1,423,389	\$173,347	12.2%
Student Services Revenue (Cafeteria, Pre- Kindergarten, etc)	\$293,584	\$356,850	-\$63,266	-17.7%
Mandated Services Reimbursement	\$195,692	\$199,894	-\$4,202	-2.1%
Subsidy from Parish	\$322,533	\$346,461	-\$23,928	-6.9%
Other School Income	\$9,556	\$3,200	\$6,356	198.6%
Christmas & Easter Collection	\$54,588	\$49,178	\$5,410	11.0%
Other Coll's & Initial Offering	\$18,113	\$87,087	-\$68,974	-79.2%
Stipend & Stole Fees	\$14,232	\$13,304	\$928	7.0%
Parish Activities Gross Receipt	\$56,468	\$48,463	\$8,005	16.5%
Gifts & Donations - Operating	\$545,361	\$425,129	\$120,232	28.3%
Other Income	\$40,006	\$43,967	-\$3,961	-9.0%
Sunday & Holiday Collections	\$879,190	\$898,066	-\$18,876	-2.1%
Extended Day/LatchKey & Daycare	\$62,638	\$65,980	-\$3,342	-5.1%
Total Income	\$4,088,697	\$3,960,968	\$127,729	3.2%
Expense Operating				
Salary Expense	\$1,905,732	\$1,958,419	-\$52,687	-2.7%
Payroll, Taxes, & Fringe Benefits	\$592,513	\$663,919	-\$71,406	-10.8%
Administrative/Office Expenses	\$135,895	\$126,065	\$9,830	7.8%
Parish Operations	\$122,698	\$93,741	\$28,957	30.9%
Instructional Expense	\$76,415	\$75,445	\$970	1.3%
Student Service Expense	\$175,106	\$111,185	\$63,921	57.5%
Extended Day/LatchKey & Daycare Expense	\$4,388	\$3,069	\$1,319	43.0%
Marketing & Fundraising Expense	\$39,384	\$29,195	\$10,189	34.9%
Building Expense	\$271,803	\$277,432	-\$5,629	-2.0%
Other Operating Expenses				
LCC Scholarships	\$40,800	\$44,000	-\$3,200	-7.3%
Diocesan Assessment	\$93,570	\$86,038	\$7,532	8.8%
School Operating Cost to Parish	\$322,533	\$346,461	-\$23,928	-6.9%
Other Operating Expense Total	\$456,903	\$476,499	-\$19,596	-4.1%
Total Expense Operating	\$3,780,837	\$3,814,969	-\$34,132	-0.9%
Net Operating Income	\$307,860	\$145,999	\$161,861	110.9%
Other Income Nonoperating				
Gifts/Donations -Special Gifts,Memorial, Grants	\$143,760	\$81,994	\$61,766	75.3%
Other Income - Investment gains and losses	\$324,465	-\$377,884	\$702,349	185.9%
Total	\$468,225	-\$295,890	\$764,115	258.2%
Other Expense - Nonoperating				
Capital Expenses	\$48,517	\$351,551	-\$303,034	-86.2%
Gifts/Donations - Restricted	\$0	\$31,397	-\$31,397	-100.0%
Other Exp- Endowment School/Parish Gift, Fees	\$190,249	\$158,807	\$31,442	19.8%
Total Other Expense - Nonoperating	\$238,766	\$541,755	-\$302,989	-55.9%
Net Nonoperating Income/Expense	\$229,459	-\$837,645	\$1,067,104	127.4%
Net Income	\$537,319	-\$691,646	\$1,228,965	177.7%
Endowment Fund Balance at End of Fiscal Year	\$3,705,821	\$3,465,917	\$239,904	6.9%

Finance Council Members:

Glenn Fisher, Chairman

Joe Joseph, Vice Chairman

Carl Berger, Secretary

Zack McCain

John Fischbach

Gary Young

Megan Scheid, Ex-Officio

Anthony Wilkerson ('21-'23) Ex-Officio

Laurieann Campbell ('23-present) Ex-Officio

Rev. Kent Kaufman, Pastor

PARISH CHARITABLE GIVING

Other Charitable Giving Highlights

Heartbeat \$80*

Military Service \$1,506

Priest Retirement \$3,433

Church in Latin America \$395

Black and Indian Missions \$322

Catholic Communications \$555

Catholic University \$240

Eastern European Church \$975

Holy Land \$748

Catholic Home Mission \$505

Human Development \$675

Religious Retirement \$1,656

Peters Pence \$37

Propagation of the Faith \$3,433

Catholic Relief \$536

Give-a-Christmas \$3,190

Christian Corner \$70,611 - offset by \$5,286 of donations

Also spent \$14,795 on capital improvement/plumbing

* Money from can recycling. Does not include baby bottle donations.

UPCOMING PROJECTS

New elevator project

Repair of cupola windows

Sidewalk repair and replacement around Church

Paint refresh in Church





ST. CHARLES BORROMEO
CATHOLIC CHURCH

2200 W Elm Street
Lima, OH 45805